



# THE HOFF BUILDING

802 W. BANNOCK, BOISE, ID 83702

OFFICE

FOR LEASE



## PROPERTY HIGHLIGHTS

- One of Boise's premier historic buildings.
- Classic details, sweeping views, gorgeous Art Deco style lobby
- Operable windows and large New York penthouse-style terraces available with some suites
- Spacious, beautifully remodeled conference center, available for all tenants
- Fantastic location near the Capitol, in the heart of Downtown Boise.

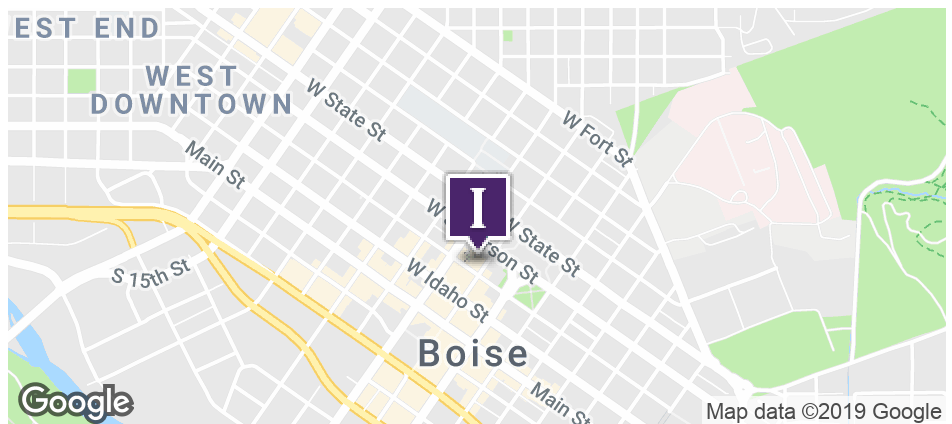
## PROPERTY INFORMATION:

Building Class: **A**

Market: **Downtown Boise**

Cross Streets: **8th & Bannock**

SPACE	SIZE (SF)	LEASE RATE
Lower Plaza 107	1,535 SF	\$13.00 SF/YR
First Floor 101	2,178 SF	\$18.50 SF/YR
Third Floor 300	219 SF	\$300 PER MONTH
Third Floor 305	486 SF	\$775 PER MONTH
Third Floor 308	1,849 SF	\$18.50 SF/YR
Fifth Floor 500	4,339 SF	\$20.00 SF/YR
Fourteenth Floor 1400	1,599 SF	\$20.00 SF/YR



380 E. Parkcenter Boulevard  
Suite 290  
Boise, ID 83706  
**www.icrellc.com**  
(208) 429.8603 / office / (208) 429-8604 fax

## LISTING AGENT:

**Wendy Shoemaker**  
wendy@icrellc.com  
o / 208.285.2611  
c / 208.859.2816

# THE HOFF BUILDING

802 W. BANNOCK, BOISE, ID 83702

## PROPERTY DESCRIPTION

## OFFICE

### PROPERTY OVERVIEW

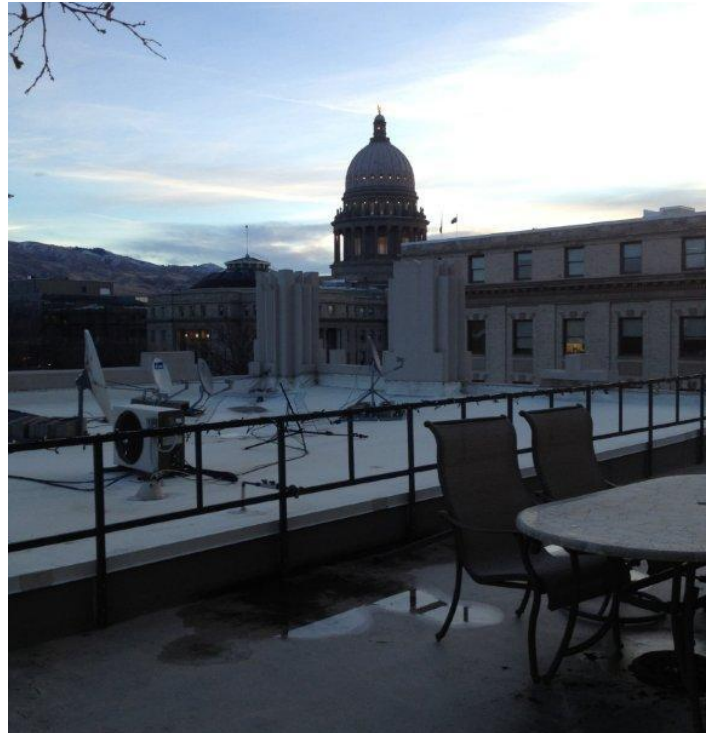
Historic Art Deco style building located in the Heart of Downtown Boise.

Built in 1929 as the Hotel Boise, the building was converted to mixed-use commercial in 1979. It has been continually updated, and features state of the art geothermal heating - very efficient, plus windows that open on most floors - a "green" property.

Wonderful views from most spaces.

### LOCATION OVERVIEW

Corner of 8th and Bannock Street - near State Capitol, State, Federal and City offices, restaurants, banks, and other businesses in the heart of Downtown Boise!



**INTERMOUNTAIN**  
COMMERCIAL REAL ESTATE

380 E. Parkcenter Boulevard  
Suite 290  
Boise, ID 83706

[www.icrellc.com](http://www.icrellc.com)

(208) 429.8603 / office / (208) 429-8604 fax

**LISTING AGENT:**

**Wendy Shoemaker**

[wendy@icrellc.com](mailto:wendy@icrellc.com)

o / 208.285.2611

c / 208.859.2816





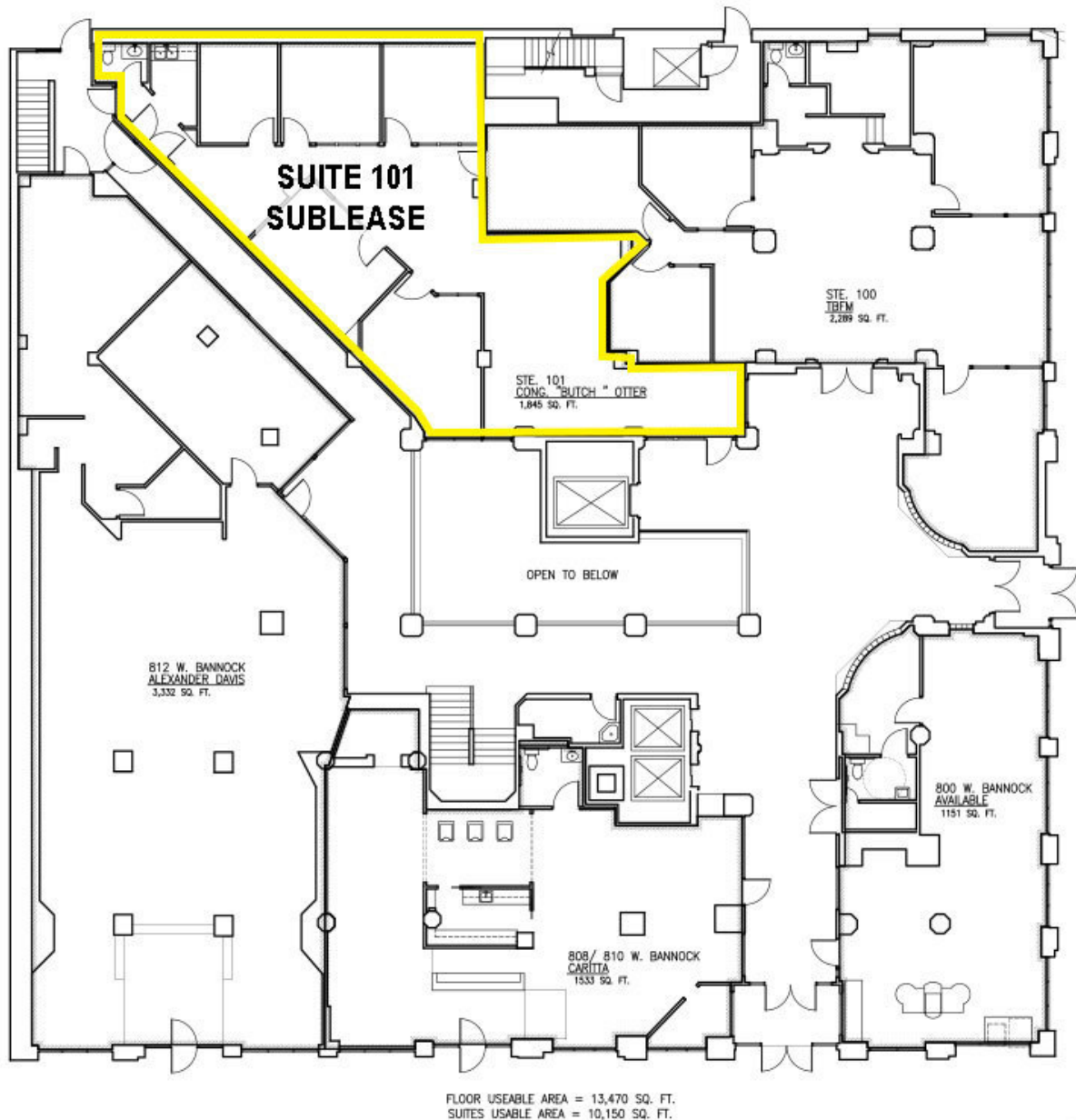


# THE HOFF BUILDING

802 W. BANNOCK, BOISE, ID 83702

FIRST FLOOR

OFFICE



**INTERMOUNTAIN**  
COMMERCIAL REAL ESTATE

380 E. Parkcenter Boulevard  
Suite 290  
Boise, ID 83706  
[www.icrellc.com](http://www.icrellc.com)  
(208) 429.8603 / office / (208) 429-8604 fax

**LISTING AGENT:**

**Wendy Shoemaker**  
[wendy@icrellc.com](mailto:wendy@icrellc.com)  
o / 208.285.2611  
c / 208.859.2816

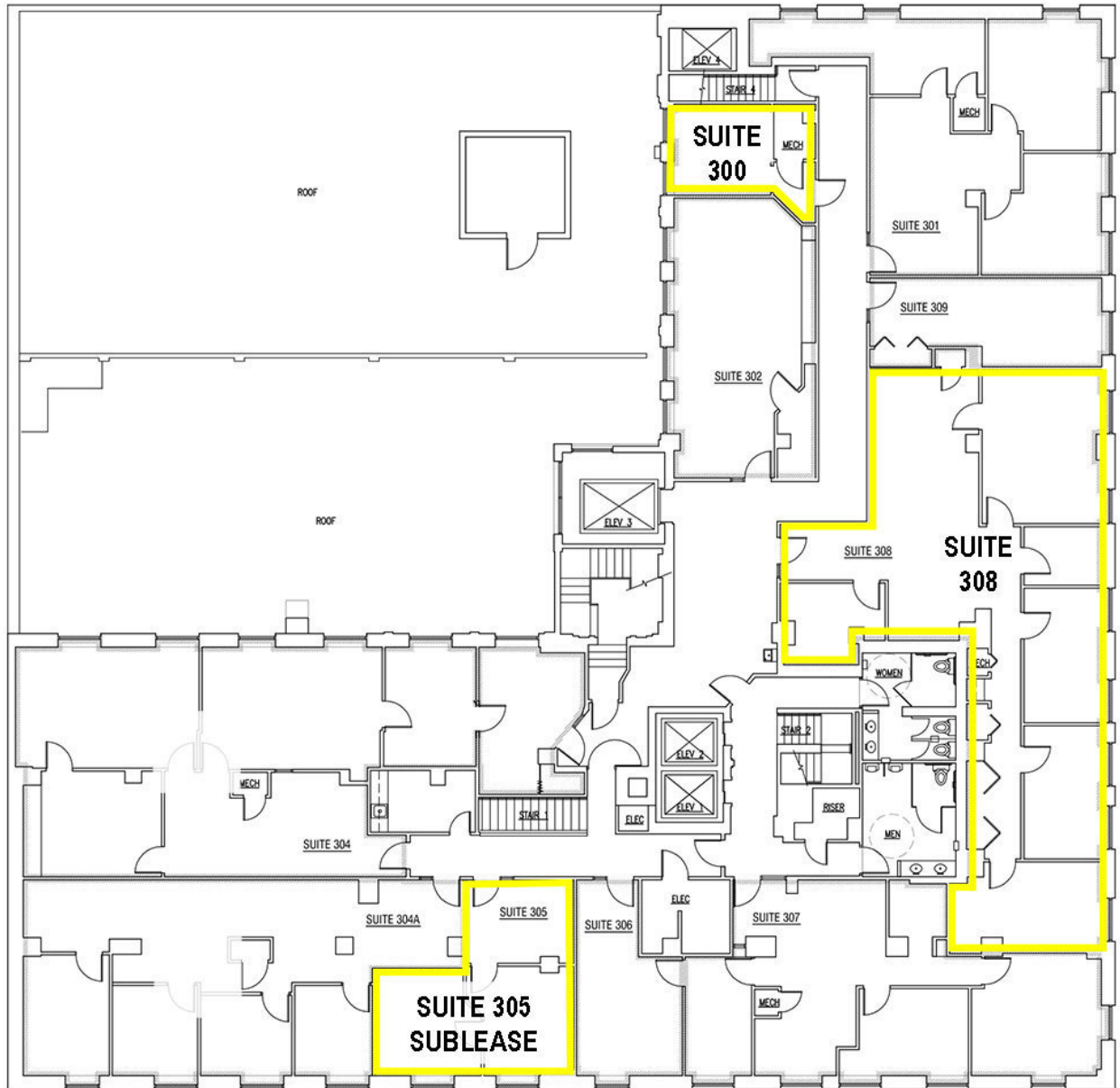


# THE HOFF BUILDING

802 W. BANNOCK, BOISE, ID 83702

THIRD FLOOR

OFFICE



**INTERMOUNTAIN**  
COMMERCIAL REAL ESTATE

380 E. Parkcenter Boulevard  
Suite 290  
Boise, ID 83706  
[www.icrellc.com](http://www.icrellc.com)  
(208) 429.8603 / office / (208) 429-8604 fax

**LISTING AGENT:**

**Wendy Shoemaker**  
[wendy@icrellc.com](mailto:wendy@icrellc.com)  
o / 208.285.2611  
c / 208.859.2816



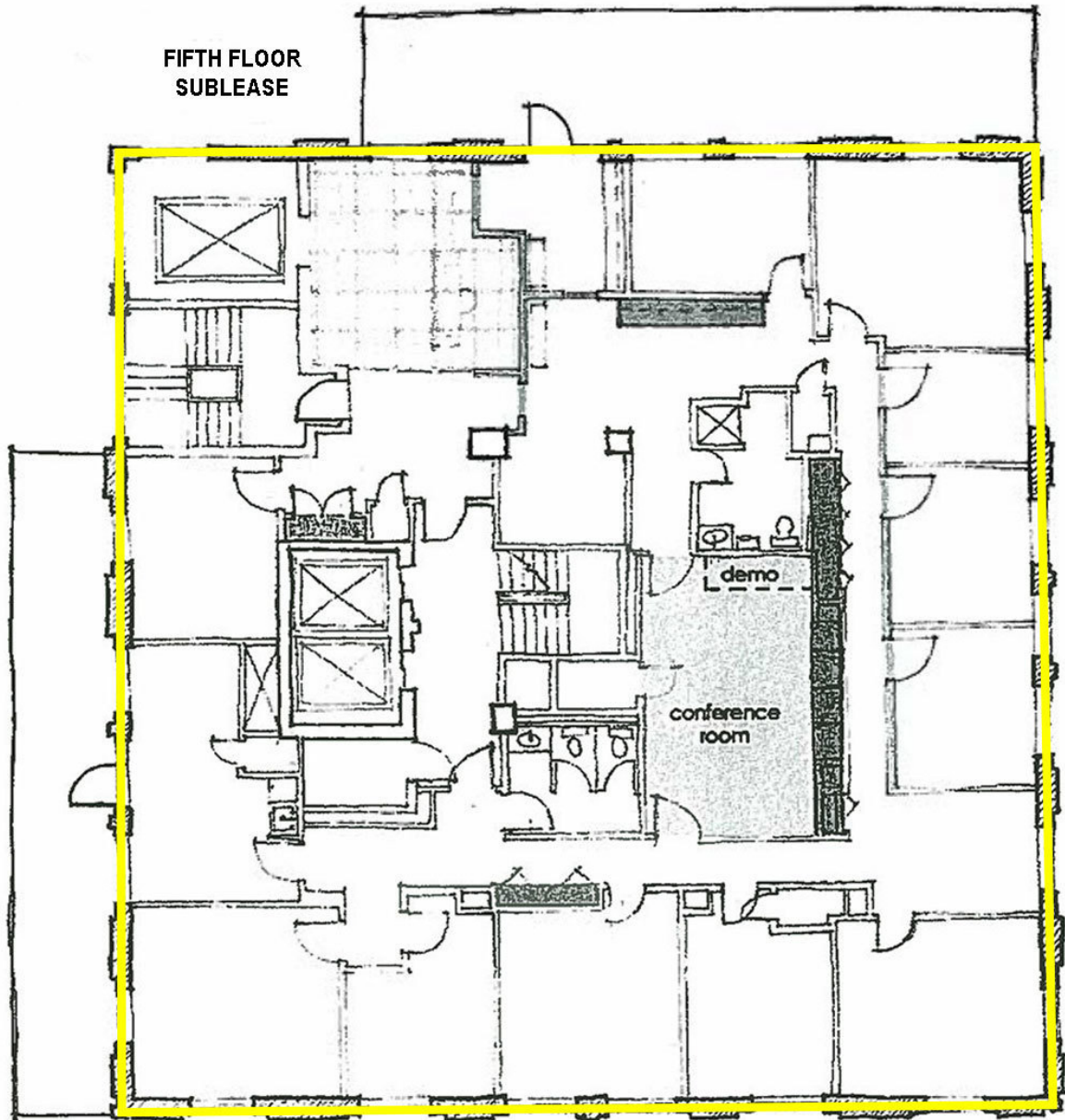
# THE HOFF BUILDING

802 W. BANNOCK, BOISE, ID 83702

FIFTH FLOOR

OFFICE

FIFTH FLOOR  
SUBLEASE



**INTERMOUNTAIN**  
COMMERCIAL REAL ESTATE

380 E. Parkcenter Boulevard  
Suite 290  
Boise, ID 83706

[www.icrellc.com](http://www.icrellc.com)

(208) 429.8603 / office / (208) 429-8604 fax

**LISTING AGENT:**

**Wendy Shoemaker**

[wendy@icrellc.com](mailto:wendy@icrellc.com)

o / 208.285.2611

c / 208.859.2816

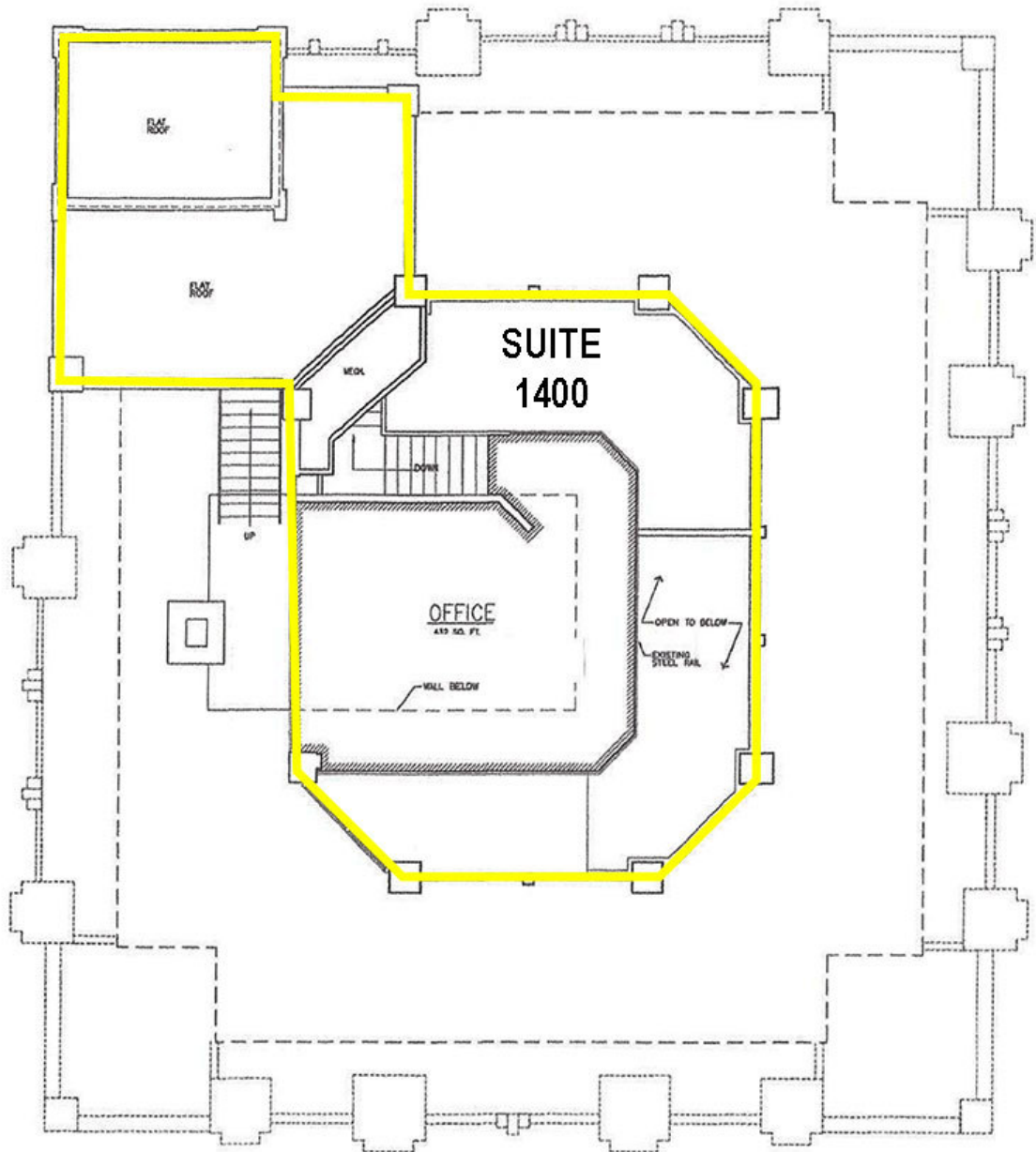


# THE HOFF BUILDING

802 W. BANNOCK, BOISE, ID 83702

14TH FLOOR - COMING SOON

OFFICE



**INTERMOUNTAIN**  
COMMERCIAL REAL ESTATE

380 E. Parkcenter Boulevard  
Suite 290  
Boise, ID 83706  
[www.icrellc.com](http://www.icrellc.com)  
(208) 429.8603 / office / (208) 429-8604 fax

**LISTING AGENT:**

**Wendy Shoemaker**  
[wendy@icrellc.com](mailto:wendy@icrellc.com)  
o / 208.285.2611  
c / 208.859.2816

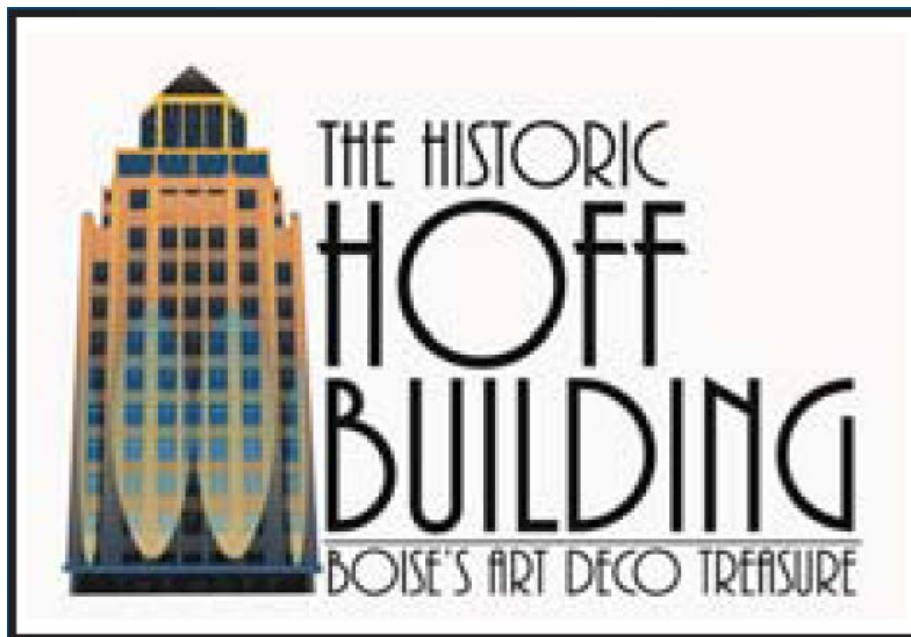




# THE HOFF BUILDING

802 W. BANNOCK, BOISE, ID 83702

HISTORIC HOFF BUILDING



OFFICE



380 E. Parkcenter Boulevard  
Suite 290  
Boise, ID 83706  
[www.icrellc.com](http://www.icrellc.com)  
(208) 429.8603 / office / (208) 429-8604 fax

LISTING AGENT:

**Wendy Shoemaker**  
[wendy@icrellc.com](mailto:wendy@icrellc.com)  
o / 208.285.2611  
c / 208.859.2816